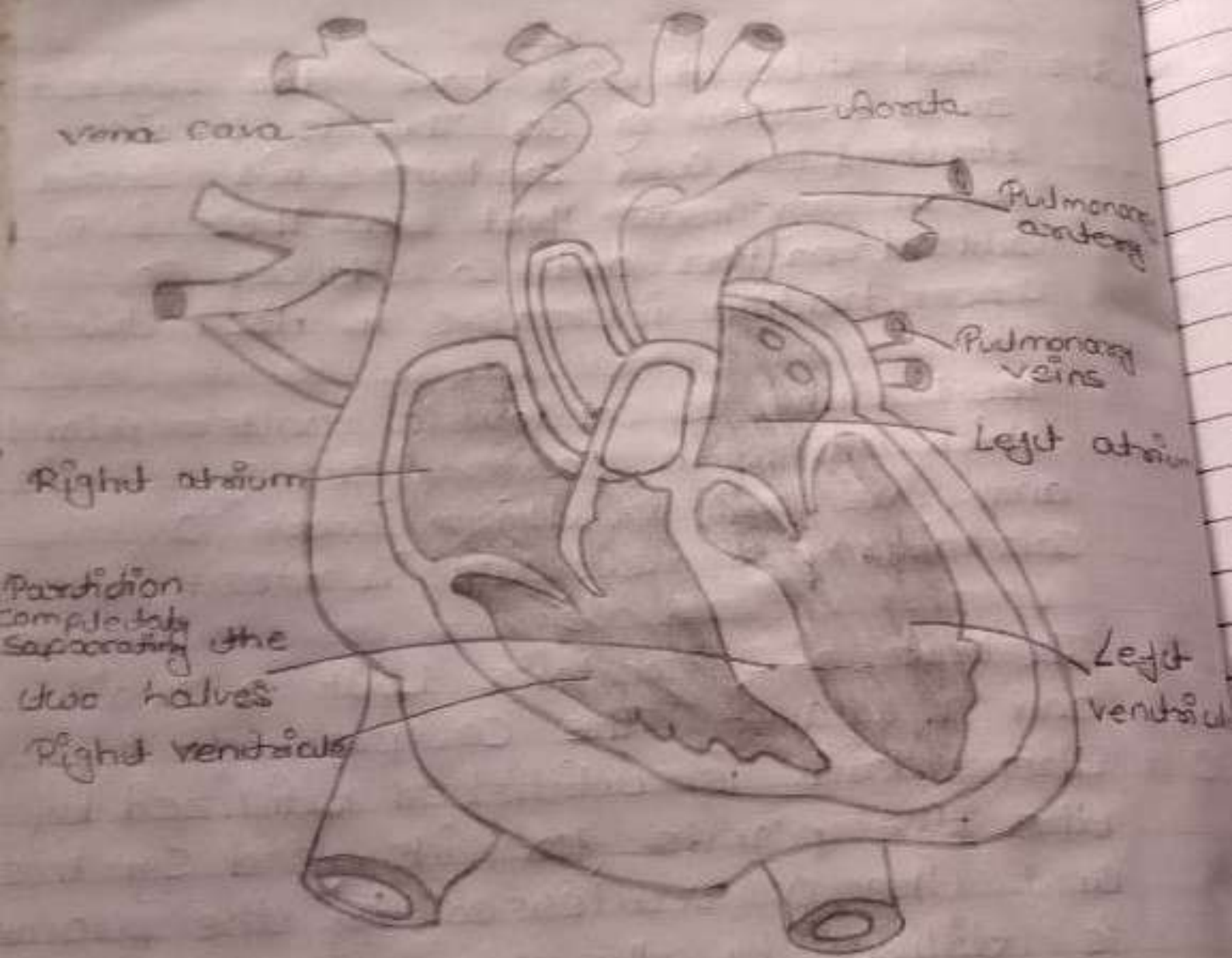


Function of the human heart

The heart is an organ that beats continuously to act as a pump for the transport of blood which carries other substances with it.

The heart pumps the oxygenated blood to the lungs for oxygenation and receives oxygenated blood from the lungs. It pumps the oxygenated blood to different parts of the body. There is double circuit circulation in a human heart that creates lub-dub sound.



Respiration in Organisms

Q-1 Why does an athlete gasp and deeper than usual after finishing the race?

Ans An athlete needs to supply extra energy to his muscle cells which have worked hard during running. For this, he breathes faster and deeper so that more oxygen is supplied to the cells.

Q-2 List the similarities and differences between aerobic and anaerobic respiration.

Ans Similarities between aerobic and anaerobic respiration

In both aerobic and anaerobic respiration the food is broken down to release energy.

Difference between aerobic and anaerobic respiration

Q.2 Why do we often sneeze when we inhale a lot of dust-laden air?

Ans. Sneezing is the body's response to the foreign particles from the inhaled air, so that only clean air enters our body. It usually occurs because of the irritation in the upper breathing passage. Irritation happens when we inhale some unwanted particles and they get trapped in our nasal cavity. Smoke, dust, pollen, etc. are some of the unwanted particles that may cause sneezing.